



THANK YOU FOR CHOOSING THE **ART VAN DELAY**

We know there are many great delay pedals on the market and appreciate you putting your faith in us! Some background on the design...

The first analogue delay that caught our attention was the Boss DM2. We loved the way it filtered the repeats and how they could go forever without taking over. This largely served as our tonal inspiration. Getting a good modulation sound is a dark art but we always loved the Deluxe Memory Man's vibrato modulation. We based my modulation algorithm on this sound but with a wider range of tones.

The Art Van Delay has digital control over every parameter and while it is not the only analogue delay to do this, we think you will find the precision and analogue feel to be unmatched by our competitors. To finish it off we gave it 32 user presets for quick changes on the fly.

Enjoy!

POWERING UP THE ART VAN DELAY

- Please only use a 9VDC Centre Negative power supply. For best performance we recommend an isolated, regulated supply. Damage from overvoltage will void the warranty.
- The Art Van Delay always powers up in **LIVE** mode meaning all the pedals are taken from the physical controls.
- The Art Van Delay remembers the **BYPASS, PRESET, TRAILS, AUX JACK, EXPRESSION ASSIGN, EXPRESSION CALIBRATION**, and **MIDI CHANNEL** settings from the last time it was powered on.



SPECS

Input Impedance: 470 kOhm
Output Impedance: 470 Ohm
Bypass Switching: Buffered
Input Voltage: 9VDC Centre Negative
Required Current: 100mA



This device complies with Part 15 of the FCC Rules. Operation is subject to the following two conditions:
(1) this device may not cause harmful interference, and
(2) this device must accept any interference received, including interference that may cause undesired operation.



CONTROLS

TIME	Sets the delay time, ranges from 40mS-1200mS.
DEPTH	Sets the amount of modulation in the delay time
RATE	Sets the rate of the modulation.
LEVEL	Adjusts the output level of the delay signal.
FEEDBACK	Adjusts the amount of repeats.

TOGGLE SWITCH

Sets the subdivision for tap tempo:

UP = 1/8 note **MIDDLE** = 1/4 note **DOWN** = Dotted 1/8

NOTE > The subdivision will affect the tempo globally eg, if the toggle is up, the maximum delay time will be 600mS.

BYPASS SWITCH

Tap to engage or disengage the effect.

Hold for 1 second to **SWITCH PRESETS**

TAP SWITCH

Tap 4 time to enter a new tempo. Hold for 1/2 second for oscillation.

LEDs

PRESET 1: White LED indicates the bypass status
Pink LED indicates tempo

PRESET 2: Pink LED indicates the bypass status
White LED indicates tempo



SETTING THE TEMPO

The tempo can be set by the **TIME** knob, **TAP TEMPO**, or **MIDI**.

TIME knob ranges from 40-1200mS

TAP TEMPO

Tap the TAP footswitch 4 times to enter a tempo. You can tap more than 4 times but the tempo will always be taken from the last 2 taps.

SUB.DIV

Sets the tempo subdivision.

Toggle Up - 

Toggle Middle - 

Toggle Down - 

The subdivision effects both the **TIME** knob and **TAP TEMPO**. ie,

SUBDIVISION	MAX TEMPO
Eight Note	600ms
Quarter Note	1200ms
Dotted Eight Note	900ms

MIDI CONTROLS

	COMMAND	VALUE RANGE
TIME	CC50	0-127
SUBDIVISION	CC55	0-31 = 1/8 Note 32-63 = 1/4 note 64-95 = Dotted 1/8 96-127 = Triplet
TAP TEMPO	CC93	Any CC value = a tap

MIDI CLOCK

Art Van Delay will accept MIDI clock. MIDI Clock will override the **TAP TEMPO** or **TIME** controls.



MODULATION

The modulation is set by the **DEPTH** and **RATE** knobs.

DEPTH is the amount of drift from the tempo. Turning the **DEPTH** all the way down will turn the modulation OFF.

RATE sets the speed at which the tempo is modulated. Turn this down for chorused sounds or up for vibrato. Ranges from 1.2-8.5Hz.

GAIN

LEVEL: Sets the volume of the repeats. 12:00 is unity volume with the dry.

FEEDBACK: Sets the volume of the signal being fed back into the delay. Feeding the signal back into the delay is how we get multiple repeats. Turning this up will result in oscillation. Oscillation will occur sooner at faster delay times because the signal is being fed back at a faster rate. For moderate tempos, oscillation will only occur above 12:00.

Hold the **TAP** footswitch to generate oscillation. When the **TAP** switch is released, the **FEEDBACK** will return to its normal setting.

PRESETS

SWITCHING PRESETS: Hold the BYPASS footswitch for 1 second to switch between **PRESET 1** and **PRESET 2**.

SAVING PRESETS: Hold both footswitches for 1/2 second to save your settings to the current **PRESET**.

PRESETS 3-32 are accessible only with MIDI. See chart >

MIDI CONTROLS

	COMMAND	VALUE RANGE
DEPTH	CC51	0-127
RATE	CC52	0-127
LEVEL	CC53	0-127
FEEDBACK	CC54	0-127
PRESETS		
PRESET 1	PC1	
PRESET 2	PC2	
PRESET 3	PC3	
PRESET 4	PC4	
PRESET 5	PC5 etc. up to PC32...	
LIVE MODE	PC0	



AUX JACK CONNECTIONS

EXTERNAL TAP TEMPO

If an external tap is connected, the footswitch functions will change.

BYPASS SWITCH : Tap to bypass the effect.

TAP SWITCH : Tap to switch **PRESETS**

EXTERNAL SWITCH : Tap 4 times to enter a tempo, Hold for 1/2 second for momentary maximum feedback.

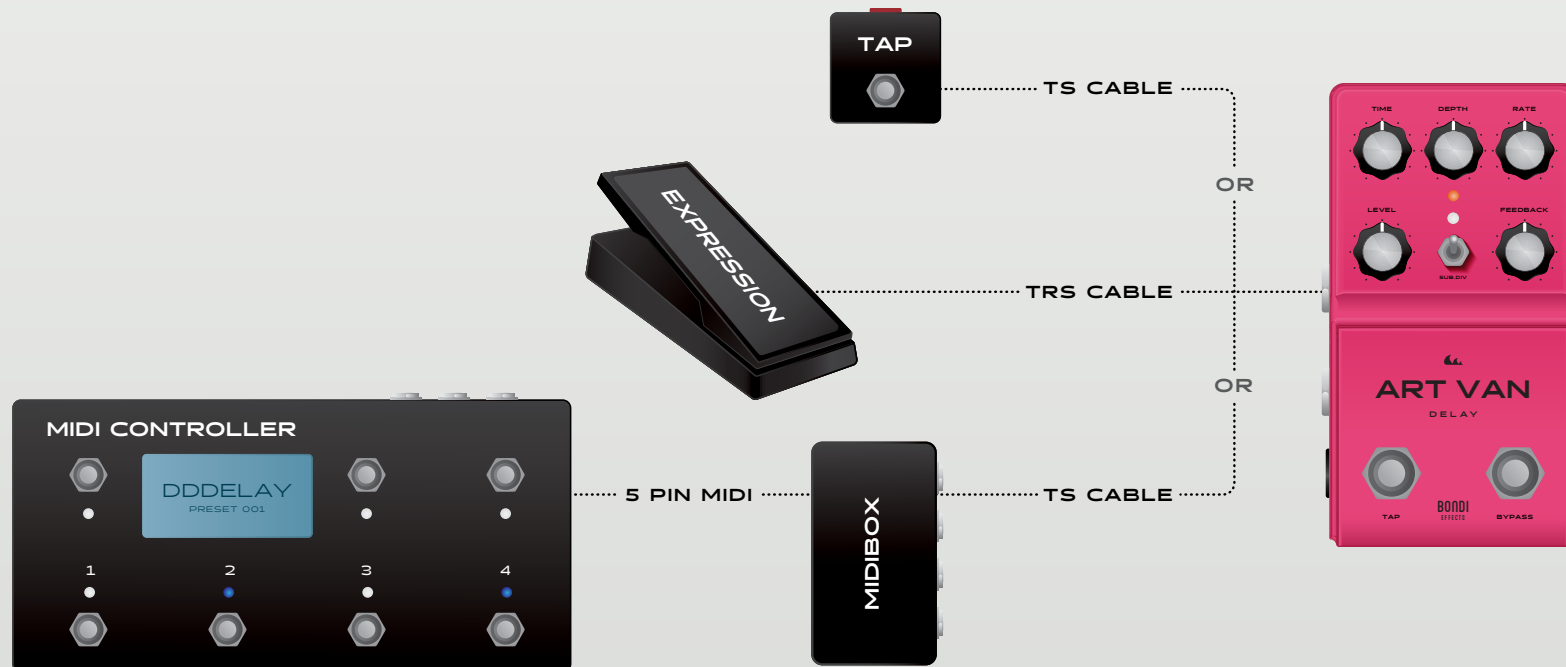
SAVE PRESET : Hold both the **BYPASS** and **TAP** switches for 1/2 second to save a preset. The preset will save to the current slot and the bypass LED will flash twice to indicate that the preset has been saved.

EXPRESSION

You can control any knob parameter with a standard TRS expression pedal. The knob sets “toe down” value for all parameters except **TIME** where the knob sets the “heel down” value. See Config Mode for how to assign the expression to a knob.

MIDI

Connect a **MIDI CONTROLLER** with a midibox. See **MIDI** page for commands.





MIDI CONTROLS

	COMMAND	VALUE RANGE
KNOBS		
TIME	CC50	0-127
DEPTH	CC51	0-127
RATE	CC52	0-127
LEVEL	CC53	0-127
FEEDBACK	CC54	0-127
PARAMETERS		
SUBDIVISION	CC55	0-31 = 1/8 Note 32-63 = 1/4 note 64-95 = Dotted 1/8 96-127 = Triplet
OTHER		
BYPASS	CC102	0-63 = Bypassed 64-127 = Engaged
EXPRESSION	CC100	0-127
TAP TEMPO	CC93	Any CC value = a tap

PRESETS

PRESET 1	PC1
PRESET 2	PC2
PRESET 3	PC3
PRESET 4	PC4
PRESET 5	PC5 etc. up to PC32...
LIVE MODE	PC0

MIDI CLOCK

Art Van Delay will accept MIDI clock.

MIDI Clock will override the **TAP TEMPO** or **TIME** controls.



CONFIGURATION

To enter **CONFIG MODE**, power on the pedal while holding the **TAP** footswitch. Release the **TAP** footswitch when both **LEDs** begin to pulse.

AUX JACK

Tap the **TAP** footswitch to toggle the **AUX** jack setting. The white **LED** will flash to indicate the **AUX** jack setting.

1 flash = DISABLED.

2 flashes = EXTERNAL TAP TEMPO (Page 7)

3 flashes = EXPRESSION (Page 7)

4 flashes = MIDI via TRS. (Page 7-8)

TRAILS

Tap the **BYPASS** footswitch to toggle the **TRAILS**. The pink **LED** will flash to indicate the **TRAILS** setting.

1 flash = TRAILS OFF

2 flashes = TRAILS ON

EXPRESSION CONFIG

ASSIGN EXPRESSION PEDAL

Turn any knob to assign the **EXPRESSION** pedal to its function. The **LEDs** will alternate flashing twice to indicate that it has been assigned. The **LEDs** will not flash if the **EXPRESSION** is already assigned to that control.

CALIBRATE EXPRESSION

1. Plug in the EXPRESSION pedal
2. Enter CONFIG MODE
3. Set the AUX jack to EXPRESSION
4. Set the EXPRESSION pedal to the TOE DOWN position, wait for the PINK LED to stop blinking.
5. Set the EXPRESSION pedal to the HEEL DOWN position, wait for the WHITE LED to stop blinking.
6. EXPRESSION is now calibrated

SET MIDI CHANNEL

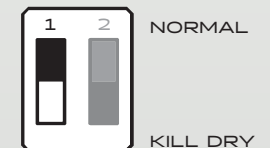
1. Plug in the MIDI controller (Page 7).
2. Enter CONFIG MODE
3. Send a MIDI PC on whichever channel you would like use.
4. The PINK LED will flash twice
5. The MIDI channel is now set to that channel.

EXIT CONFIG

Hold both footswitches for 1/2 second to exit **CONFIG MODE**.

KILL DRY

There is an internal DIP switch, which can be used to cut the dry signal when running a parallel rig. To cut the dry signal, switch DIP switch 1 to the lower position. Will cut the dry signal even when pedal is bypassed.





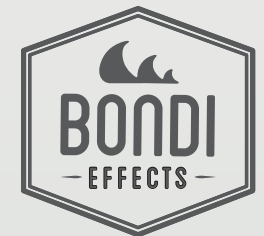
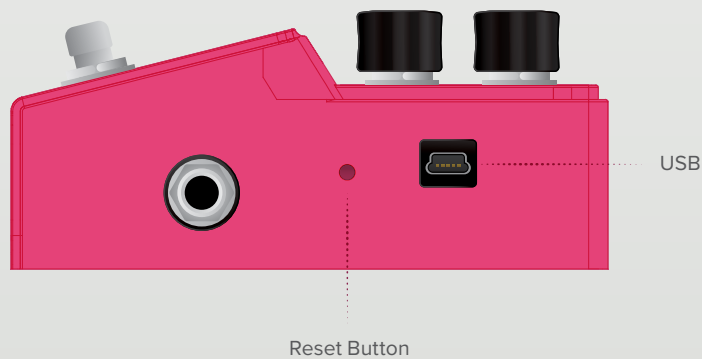
FIRMWARE UPDATES


There is a small red button on the right side of the pedal, next to the USB connector. This is the reset button.


QUICK NOTE : When the firmware update is successful, you will receive a “**Disk Not Ejected Properly**” warning. Just wanted to mention this before you start.


To update the firmware:

1. Download the firmware update UF2 file from www.bondieffects.com
2. Plug in the USB connector
3. Press the RESET button twice (use a pen or small screwdriver)
4. An external drive will appear on your computer called “**VANDELAY**” and the pink LED will pulse.
5. Drag and drop the firmware update UF2 file onto the **VANDELAY** drive.
6. Immediately after, you will receive a “**Disk Not Ejected Properly**” warning, which means the firmware update is successful.



 www.bondieffects.com

 @bondieffects

 /bondieffects